

Proračun osvetljenja

Beogradski vodovod i kanalizacija

PROLAZ ISPOD SAVE

Partner for Contact:

Order No.:

Company:

Customer No.:

Date: 08.07.2021

Operator:



Operator
Telephone
Fax
e-Mail

Table of contents

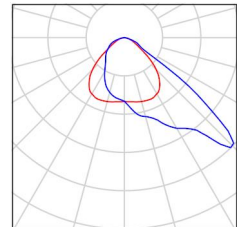
Proračun osvetljenja	
Project Cover	1
Table of contents	2
Luminaire parts list	3
Ulazni šaht, veći	
Summary	4
Luminaires (coordinates list)	5
Segment tunela ispod Save / bez cevi	
Summary	6
Luminaires (coordinates list)	7
Room Surfaces	
Workplane	
Greyscale (E)	8
Value Chart (E)	9
Segment tunela ispod Save / sa cevima	
Room elements (coordinates list)	10
Calculation surfaces (coordinates list)	12
Calculation surfaces (results overview)	13
3D Rendering	14
Room Surfaces	
Prostor iznadju cevi	
Isolines (E, Perpendicular)	15
Greyscale (E, Perpendicular)	16
Value Chart (E, Perpendicular)	17



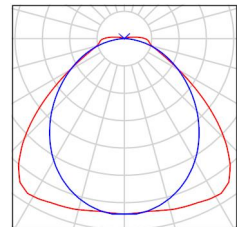
Operator
Telephone
Fax
e-Mail

Proračun osvetljenja / Luminaire parts list

8 Pieces PHILIPS BVP125 T25 1 xLED80-4S/730 OFA52
Article No.:
Luminous flux (Luminaire): 8000 lm
Luminous flux (Lamps): 8000 lm
Luminaire Wattage: 72.0 W
Luminaire classification according to UTE: 1.00F
CIE flux code: 46 91 99 100 100
Fitting: 1 x LED80-4S/730 (Correction Factor 1.000).

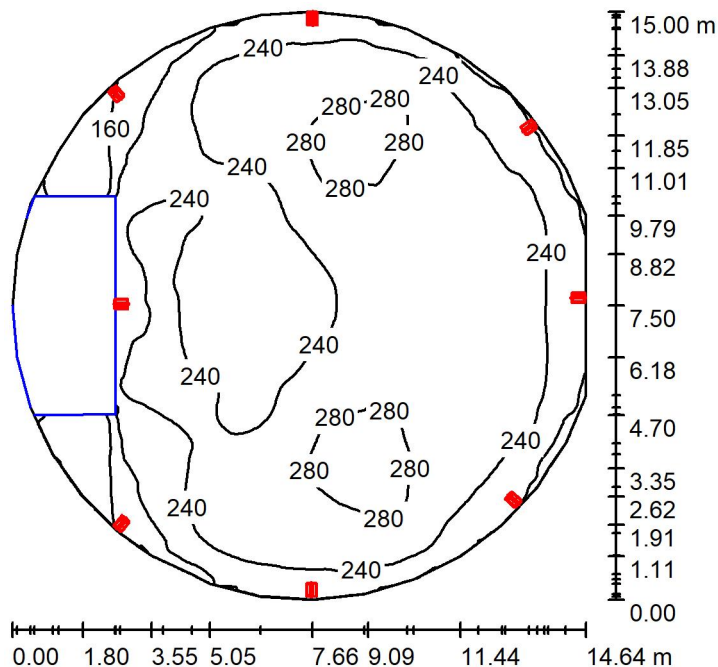


36 Pieces PHILIPS WT120C L600 1xLED18S/840
Article No.:
Luminous flux (Luminaire): 2100 lm
Luminous flux (Lamps): 2100 lm
Luminaire Wattage: 17.6 W
Luminaire classification according to UTE: 0.97D+0.03T
CIE flux code: 48 81 95 97 100
Fitting: 1 x LED18S/840/- (Correction Factor 1.000).



Operator
 Telephone
 Fax
 e-Mail

Ulazni šaht, veći / Summary



Height of Room: 22.000 m, Mounting Height: 6.000 m, Light loss factor: 0.90

Values in Lux, Scale 1:193

Surface	ρ [%]	E_{av} [lx]	E_{min} [lx]	E_{max} [lx]	u_0
Workplane	/	241	114	297	0.473
Floor	20	222	9.68	296	0.044
Ceiling	70	12	7.05	14	0.610
Walls (38)	50	37	0.26	8244	/

Workplane:

 Height: 0.000 m
 Grid: 128 x 128 Points
 Boundary Zone: 0.000 m

Illuminance Quotient (according to LG7): Walls / Working Plane: 0.155, Ceiling / Working Plane: 0.048.

Luminaire Parts List

No.	Pieces	Designation (Correction Factor)	Φ (Luminaire) [lm]	Φ (Lamps) [lm]	P [W]
1	8	PHILIPS BVP125 T25 1 xLED80-4S/730 OFA52 (1.000)	8000	8000	72.0
Total:			64000	64000	576.0

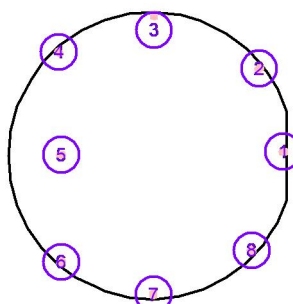
 Specific connected load: $3.30 \text{ W/m}^2 = 1.37 \text{ W/m}^2/100 \text{ lx}$ (Ground area: 174.73 m^2)



Operator
Telephone
Fax
e-Mail

Ulazni šaht, veći / Luminaires (coordinates list)**PHILIPS BVP125 T25 1 xLED80-4S/730 OFA52**

8000 lm, 72.0 W, 1 x 1 x LED80-4S/730 (Correction Factor 1.000).

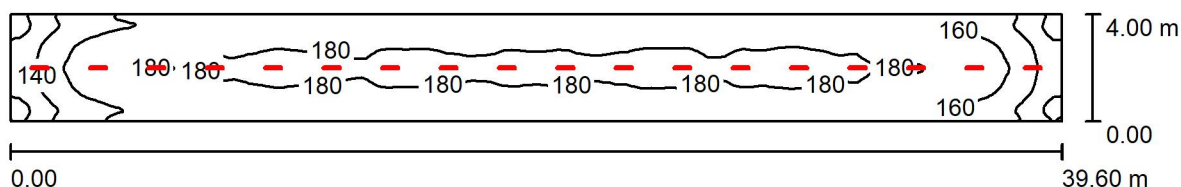


No.	Position [m]			Rotation [°]		
	X	Y	Z	X	Y	Z
1	15.663	15.655	6.000	0.0	0.0	90.0
2	14.400	20.000	6.000	0.0	0.0	125.0
3	8.880	22.774	6.000	0.0	0.0	180.0
4	3.874	20.859	6.000	0.0	0.0	-140.0
5	4.000	15.500	6.000	0.0	0.0	-90.0
6	4.000	9.900	6.000	0.0	0.0	-40.0
7	8.848	8.206	6.000	0.0	0.0	0.0
8	14.000	10.500	6.000	0.0	0.0	50.0



Operator
Telephone
Fax
e-Mail

Segment tunela ispod Save / bez cevi / Summary



Height of Room: 3.200 m, Mounting Height: 3.200 m, Light loss factor:
0.90

Values in Lux, Scale 1:284

Surface	ρ [%]	E_{av} [lx]	E_{min} [lx]	E_{max} [lx]	u0
Workplane	/	169	113	185	0.666
Floor	20	169	115	184	0.677
Ceilings (14)	70	36	0.00	181	/
Walls (8)	50	118	0.00	196	/

Workplane:

Height: 0.000 m
Grid: 128 x 32 Points
Boundary Zone: 0.000 m

Illuminance Quotient (according to LG7): Walls / Working Plane: - , Ceiling / Working Plane: - .

Luminaire Parts List

No.	Pieces	Designation (Correction Factor)	Φ (Luminaire) [lm]	Φ (Lamps) [lm]	P [W]
1	18	PHILIPS WT120C L600 1xLED18S/840 (1.000)	2100	2100	17.6
Total:			37800	37800	316.8

Specific connected load: $2.00 \text{ W/m}^2 = 1.18 \text{ W/m}^2/100 \text{ lx}$ (Ground area: 158.40 m^2)

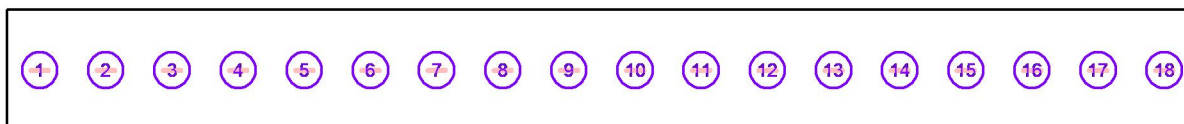


Operator
Telephone
Fax
e-Mail

Segment tunela ispod Save / bez cevi / Luminaires (coordinates list)

PHILIPS WT120C L600 1xLED18S/840

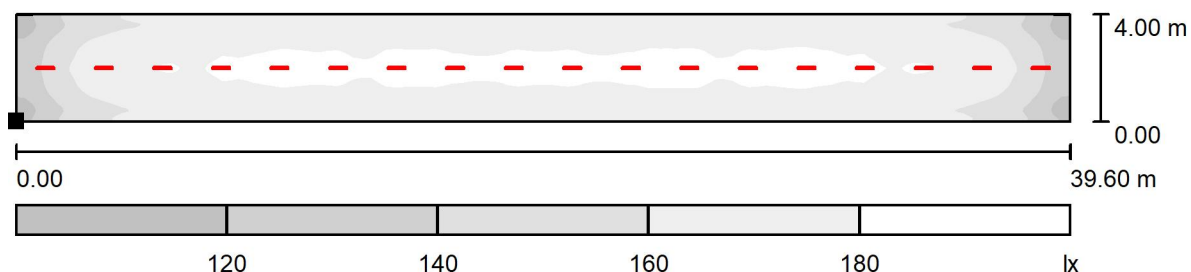
2100 lm, 17.6 W, 1 x 1 x LED18S/840/- (Correction Factor 1.000).



No.	Position [m]			Rotation [°]		
	X	Y	Z	X	Y	Z
1	1.100	2.000	3.200	0.0	0.0	90.0
2	3.300	2.000	3.200	0.0	0.0	90.0
3	5.500	2.000	3.200	0.0	0.0	90.0
4	7.700	2.000	3.200	0.0	0.0	90.0
5	9.900	2.000	3.200	0.0	0.0	90.0
6	12.100	2.000	3.200	0.0	0.0	90.0
7	14.300	2.000	3.200	0.0	0.0	90.0
8	16.500	2.000	3.200	0.0	0.0	90.0
9	18.700	2.000	3.200	0.0	0.0	90.0
10	20.900	2.000	3.200	0.0	0.0	90.0
11	23.100	2.000	3.200	0.0	0.0	90.0
12	25.300	2.000	3.200	0.0	0.0	90.0
13	27.500	2.000	3.200	0.0	0.0	90.0
14	29.700	2.000	3.200	0.0	0.0	90.0
15	31.900	2.000	3.200	0.0	0.0	90.0
16	34.100	2.000	3.200	0.0	0.0	90.0
17	36.300	2.000	3.200	0.0	0.0	90.0
18	38.500	2.000	3.200	0.0	0.0	90.0



Operator
Telephone
Fax
e-Mail

Segment tunela ispod Save / bez cevi / Workplane / Greyscale (E)

Position of surface in room:
Marked point:
(0.000 m, 0.000 m, 0.000 m)

Scale 1 : 284



Grid: 128 x 32 Points

E_{av} [lx]
169

E_{min} [lx]
113

E_{max} [lx]
185

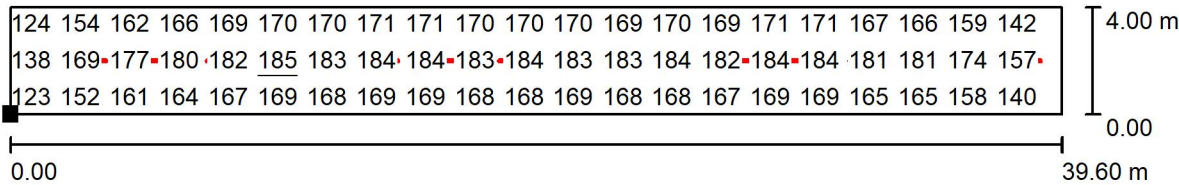
$u0$
0.666

E_{min} / E_{max}
0.608



Operator
Telephone
Fax
e-Mail

Segment tunela ispod Save / bez cevi / Workplane / Value Chart (E)



Not all calculated values could be displayed.

Values in Lux, Scale 1 : 284

Position of surface in room:
Marked point:
(0.000 m, 0.000 m, 0.000 m)

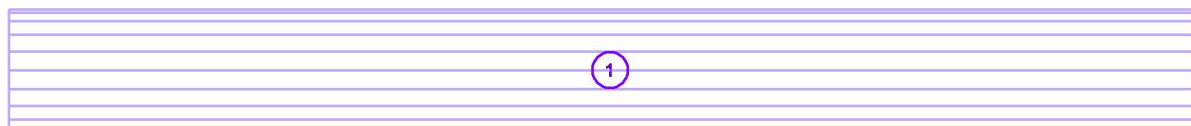


Grid: 128 x 32 Points

E_{av} [lx]	E_{min} [lx]	E_{max} [lx]	u0	E_{min} / E_{max}
169	113	185	0.666	0.608



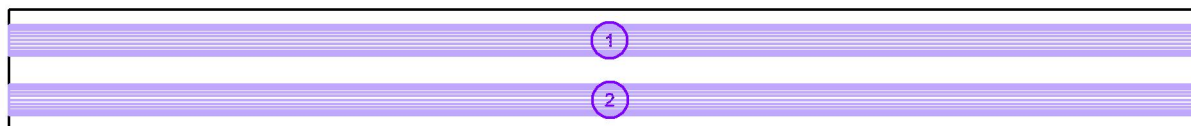
Operator
Telephone
Fax
e-Mail

Segment tunela ispod Save / sa cevima / Room elements (coordinates list)**Vault**

No.	Position [m]			L	Size [m]		H	Rotation [°]		Z
	X	Y	Z		W			X	Y	
1	20.000	2.000	2.150	4.000	40.000		2.050	0.0	0.0	90.0



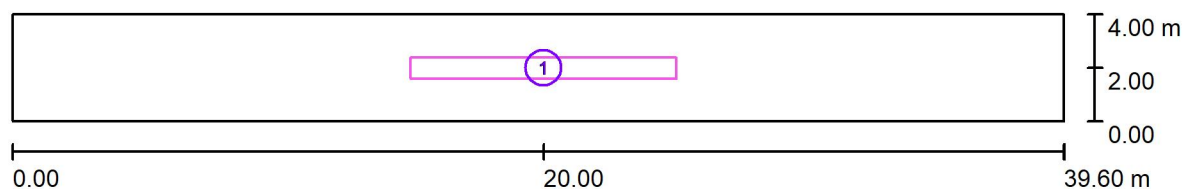
Operator
Telephone
Fax
e-Mail

Segment tunela ispod Save / sa cevima / Room elements (coordinates list)**Round column**

No.	Position [m]			L	Size [m]		H	Rotation [°]		Z
	X	Y	Z		W			X	Y	
1	19.984	2.989	1.170	1.000	1.000		40.000	0.0	90.0	0.0
2	20.000	1.024	1.170	1.000	1.000		40.000	0.0	90.0	0.0



Operator
Telephone
Fax
e-Mail

Segment tunela ispod Save / sa cevima / Calculation surfaces (coordinates list)

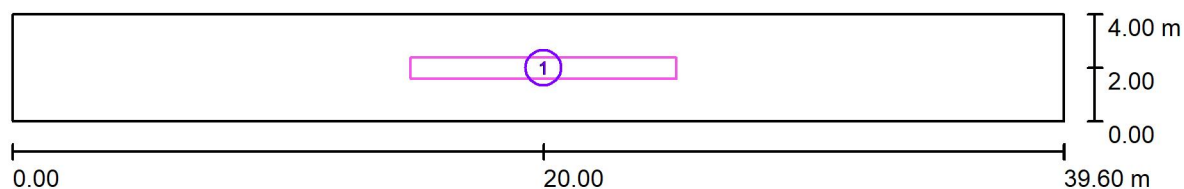
Scale 1 : 284

Calculation Surface List

No.	Designation	Position [m]			Size [m]		Rotation [°]		
		X	Y	Z	L	W	X	Y	Z
1	Prostor iznadju cevi	20.000	2.000	0.000	10.000	0.800	0.000	0.000	0.000



Operator
Telephone
Fax
e-Mail

Segment tunela ispod Save / sa cevima / Calculation surfaces (results overview)

Scale 1 : 284

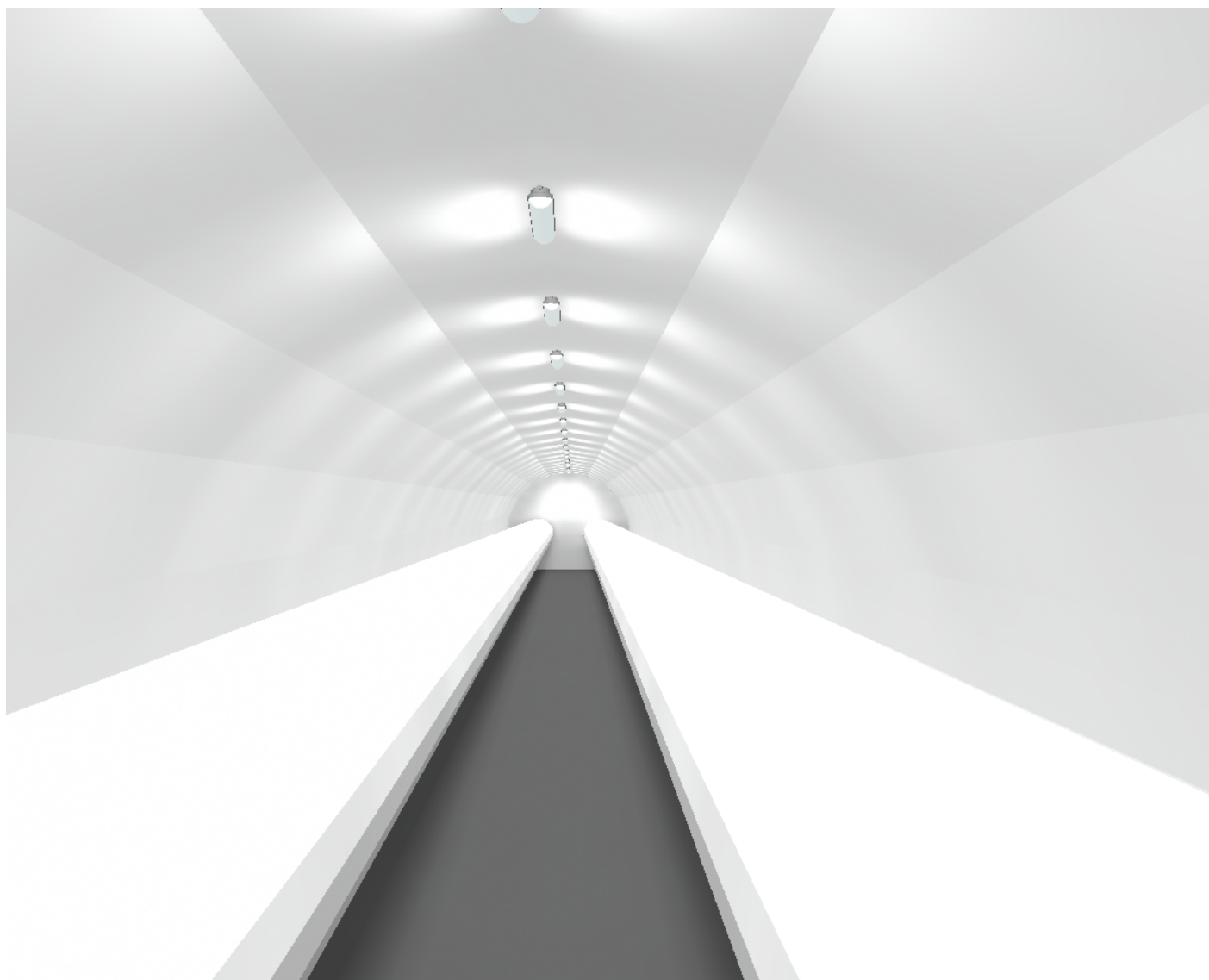
Calculation Surface List

No.	Designation	Type	Grid	E_{av} [lx]	E_{min} [lx]	E_{max} [lx]	u_0	E_{min} / E_{max}
1	Prostor iznadju cevi	perpendicular	128 x 8	161	158	165	0.983	0.960



Operator
Telephone
Fax
e-Mail

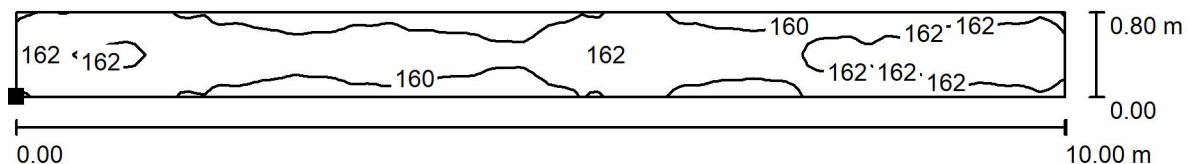
Segment tunela ispod Save / sa cevima / 3D Rendering





Operator
Telephone
Fax
e-Mail

Segment tunela ispod Save / sa cevima / Prostor iznadju cevi / Isolines (E, Perpendicular)



Values in Lux, Scale 1 : 72

Position of surface in room:
Marked point:
(15.000 m, 1.600 m, 0.000 m)



Grid: 128 x 8 Points

E_{av} [lx]
161

E_{min} [lx]
158

E_{max} [lx]
165

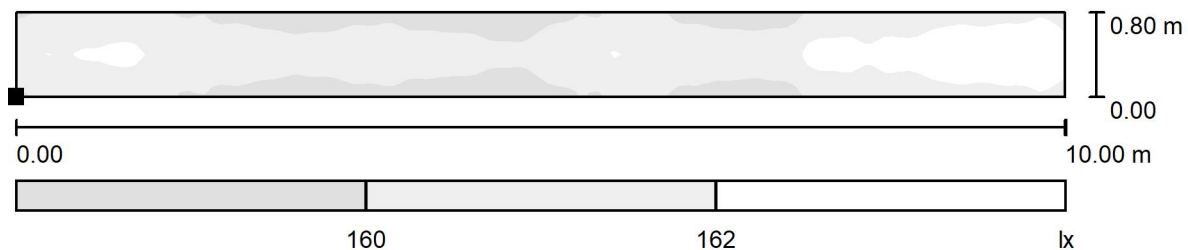
u_0
0.983

E_{min} / E_{max}
0.960



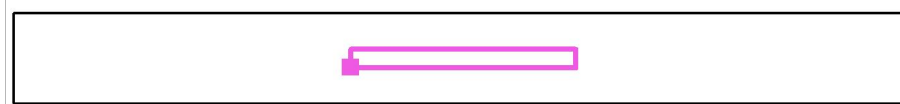
Operator
Telephone
Fax
e-Mail

Segment tunela ispod Save / sa cevima / Prostor iznadju cevi / Greyscale (E, Perpendicular)



Position of surface in room:
Marked point:
(15.000 m, 1.600 m, 0.000 m)

Scale 1 : 72



Grid: 128 x 8 Points

E_{av} [lx]
161

E_{min} [lx]
158

E_{max} [lx]
165

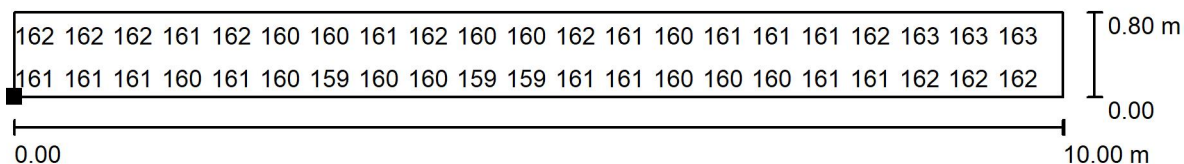
u_0
0.983

E_{min} / E_{max}
0.960



Operator
Telephone
Fax
e-Mail

Segment tunela ispod Save / sa cevima / Prostor iznadju cevi / Value Chart (E, Perpendicular)



Values in Lux, Scale 1 : 72

Not all calculated values could be displayed.

Position of surface in room:
Marked point:
(15.000 m, 1.600 m, 0.000 m)



Grid: 128 x 8 Points

E_{av} [lx]
161

E_{min} [lx]
158

E_{max} [lx]
165

u_0
0.983

E_{min} / E_{max}
0.960